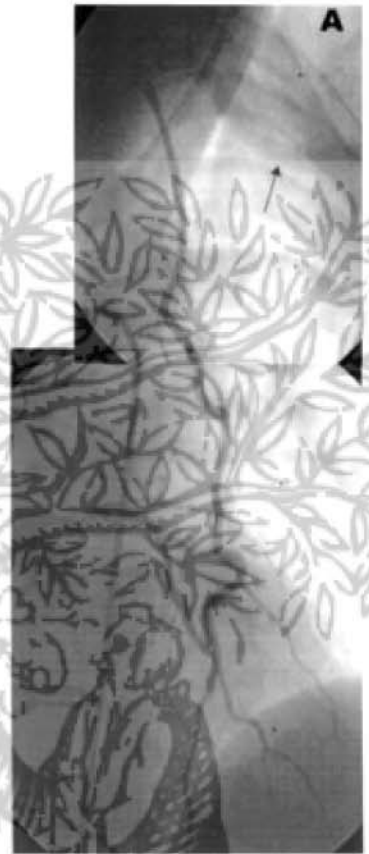
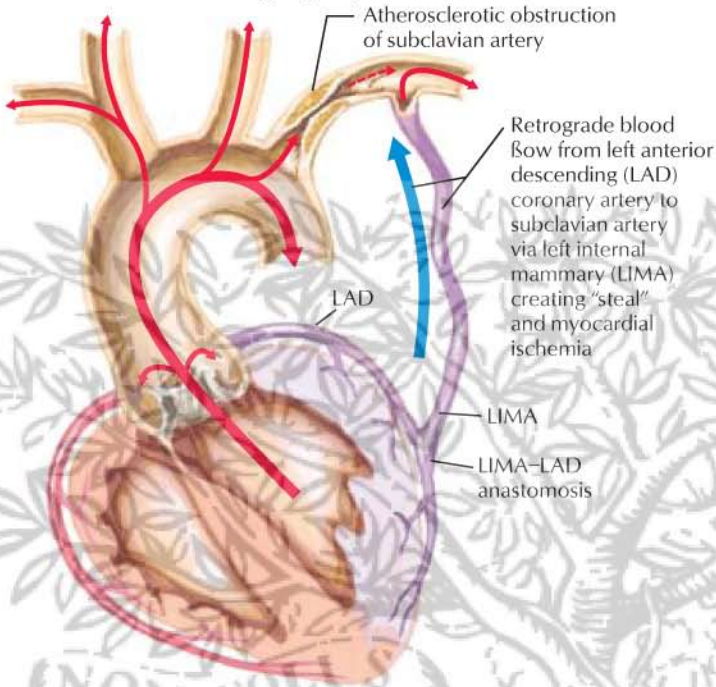


Angiographic Demonstration of Subclavian Steal

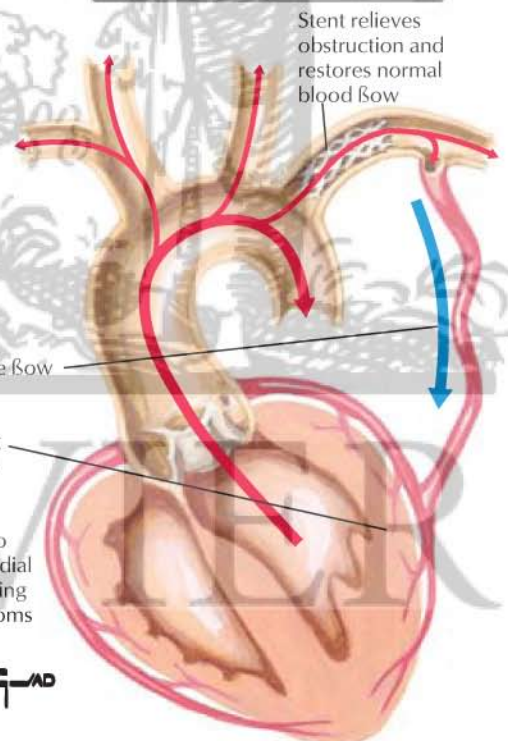
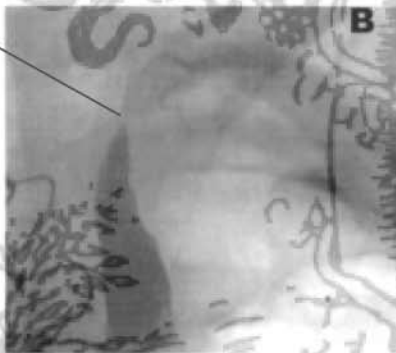


Initial left coronary artery angiography in a patient with prior bypass surgery with complaints of increasing angina. Angiogram demonstrates retrograde flow of dye up LIMA into subclavian artery (arrow).



Obstruction of subclavian artery

Poor opacification of artery distal to stenosis and minimal appearance of dye in LIMA



Stent placement restores flow to subclavian and via LIMA-LAD anastomosis also restores myocardial perfusion, relieving ischemic symptoms

JOHN A. CRAIG MD