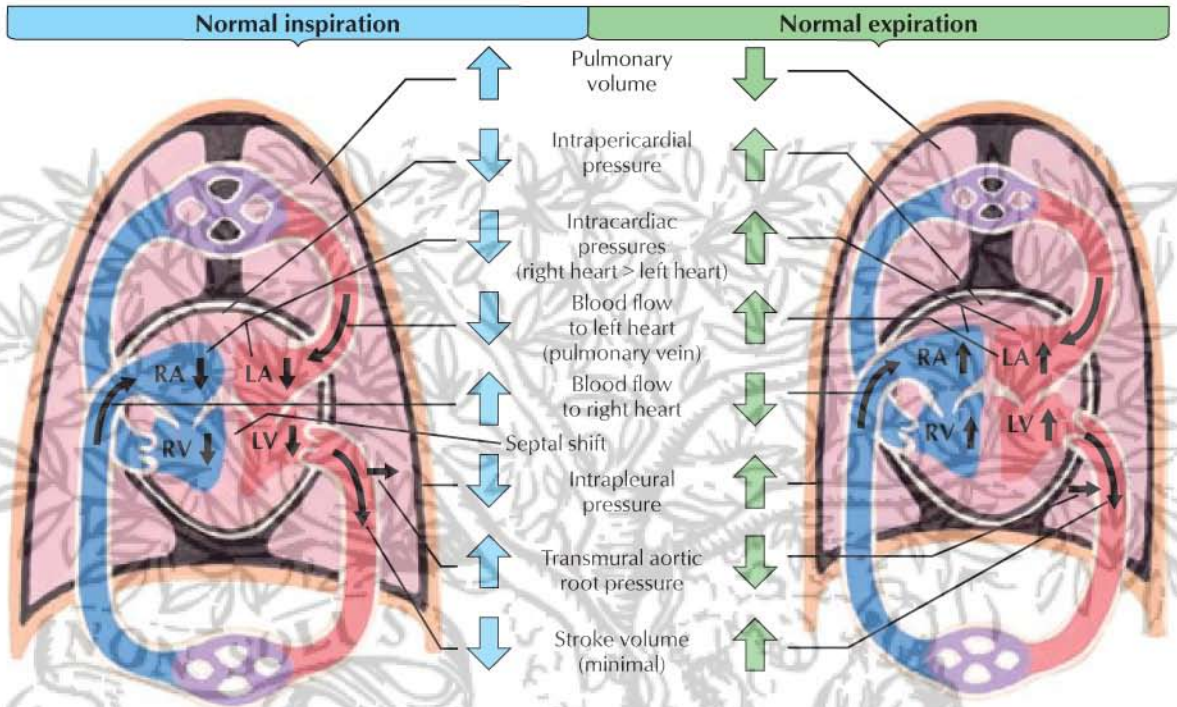
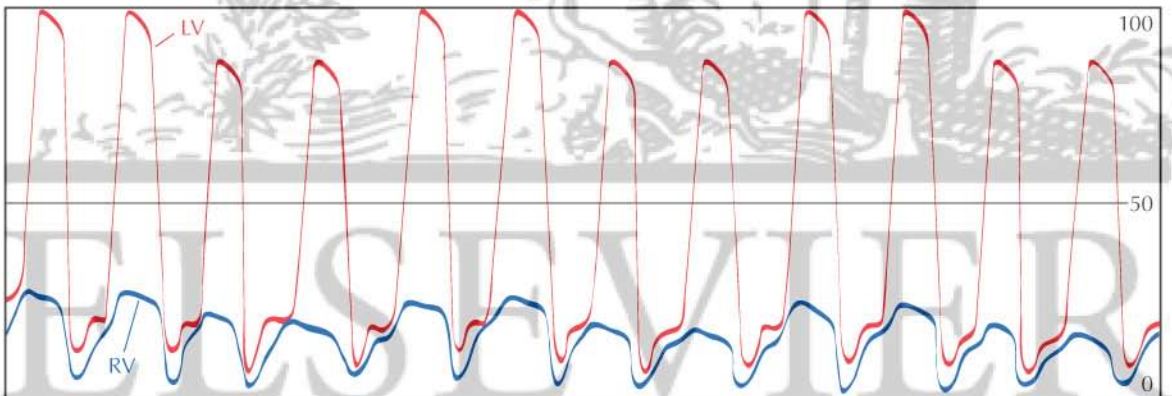
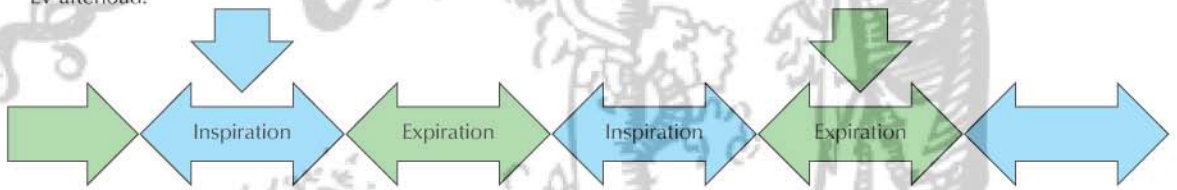


Normal Cardiac Blood Flow During Inspiration and Expiration



On inspiration, intrapleural pressure drops and abdominal pressure increases with increased blood flow through the right heart and slight decrease in flow to left heart. Increased aortic root transmural pressure adds a minor amount of LV afterload.

On expiration, intrapleural pressure increases and abdominal pressure decreases with decreased blood flow through the right heart and increase in flow to left heart.



Simultaneous measurement of RV and LV systolic pressure reveals a concordant decrease in pressure in both chambers during inspiration, with a similar concordant increase in pressure in both ventricles during expiration. Pressure changes are exaggerated for emphasis.

JOHN A. CRAIG MD