

Hydrocephalus

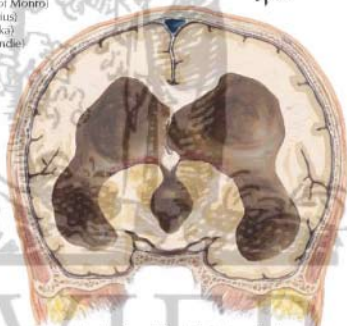
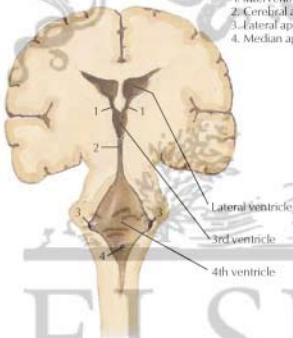


Clinical appearance in advanced hydrocephalus

Potential lesion sites in obstructive hydrocephalus

1. Interventricular foramina (of Monro)
2. Cerebral aqueduct (of Sylvius)
3. Lateral apertures (of Luschka)
4. Median aperture (of Magendie)

F. Netter M.D.



Section through brain showing marked dilation of lateral and 3rd ventricles