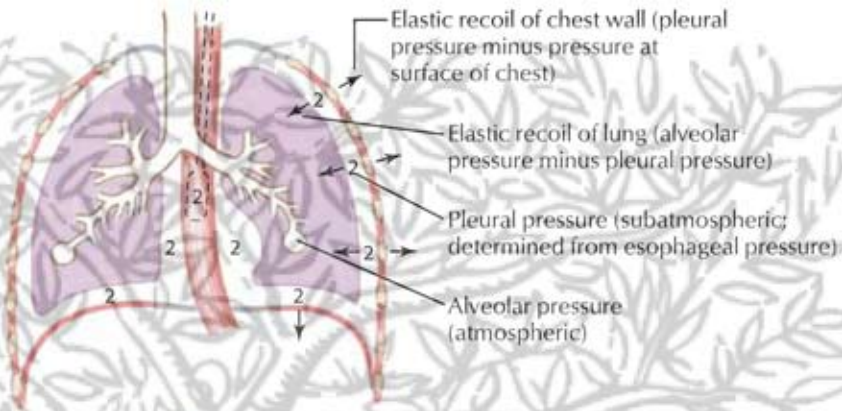


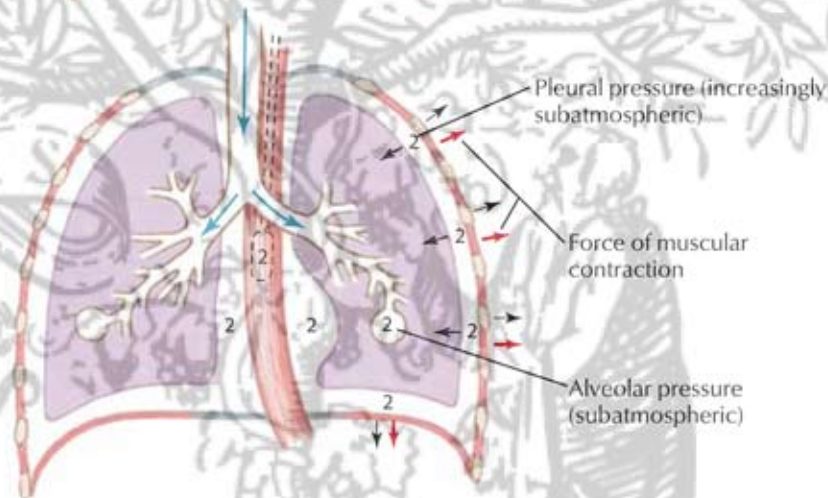
A. At rest

1. Respiratory muscles are at rest
2. Recoil of lung and chest wall are equal but opposite
3. Pressure along tracheobronchial tree is atmospheric
4. There is no airflow



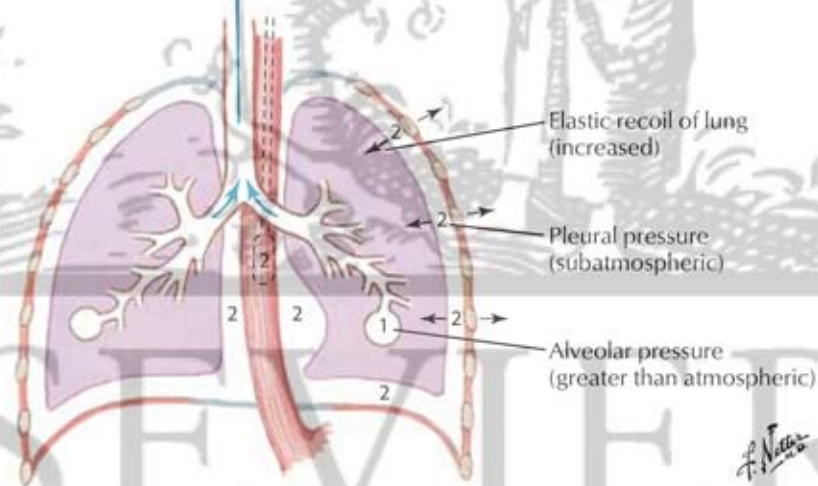
B. During inspiration

Inspiratory muscles contract and chest expands; alveolar pressure becomes subatmospheric with respect to pressure at airway opening. Air flows into lungs



C. During expiration

Inspiratory muscles relax; recoil of lung causes alveolar pressure to exceed pressure at airway opening. Air flows out of lung



ELSEVIER