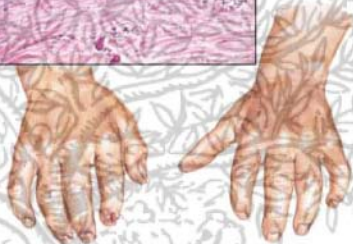


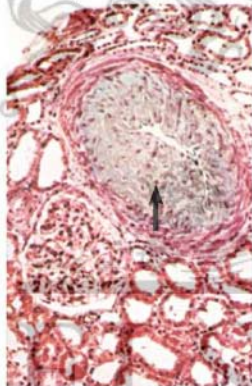
Typical skin changes in scleroderma. Extensive collagen deposition and some epidermal atrophy



Sclerodactyly: Fingers partially fixed in semiflexed position; terminal phalanges atrophied; fingertips pointed and ulcerated

*J. Netter M.D.*

Characteristics: Thickening, tightening, and rigidity of facial skin, with small, constricted mouth and narrow lips, in atrophic phase of scleroderma



Arcuate artery in acute scleroderma. Mucoid swelling of intima in medium-sized artery of kidney, most often seen in acute cases



Arcuate artery in acute scleroderma. Colloidal iron stain, demonstrating that intimal swelling is composed largely of mucopolysaccharides



Arcuate artery in chronic scleroderma. Marked intimal thickening, consisting of dense, laminated matrix, rich in elastic fibers, and small amount of collagen