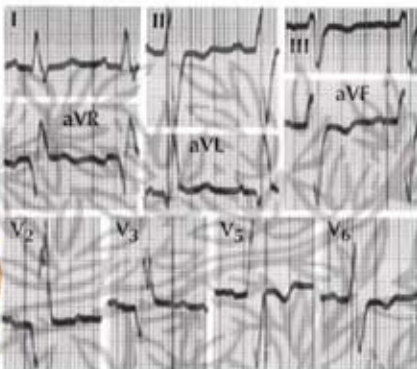
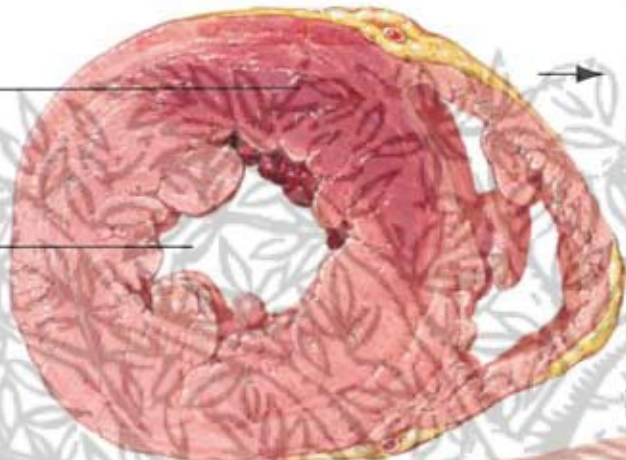


Infarct

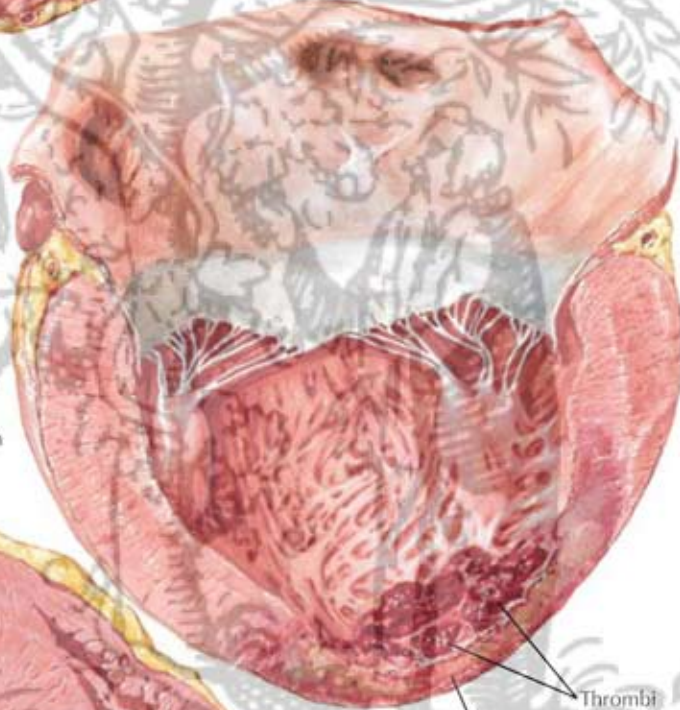
Ventricle



Acute anteroseptal infarct. With right bundle branch block

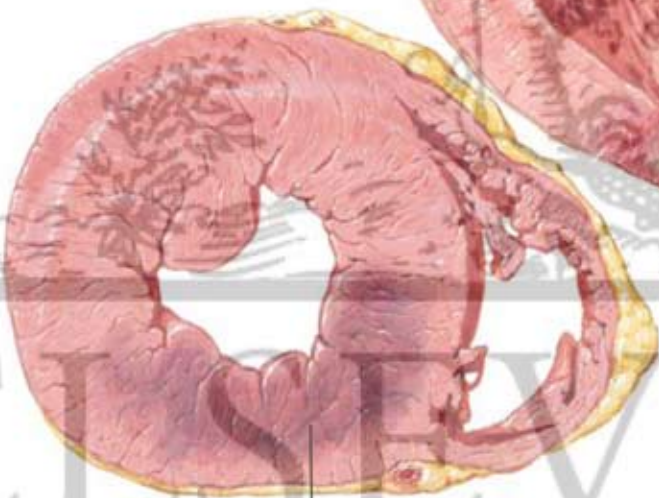
Acute anteroseptal, transmural infarct. Complicated by right bundle branch block, seen in coronal section of heart

Subacute apical infarct. With resorption of muscle (thin wall) and mural thrombi. Seen in longitudinal section of heart



Infarct

Thrombi



Infarct

Acute posterior subendocardial infarct. Seen in coronal section of heart

*F. Netter M.D.*