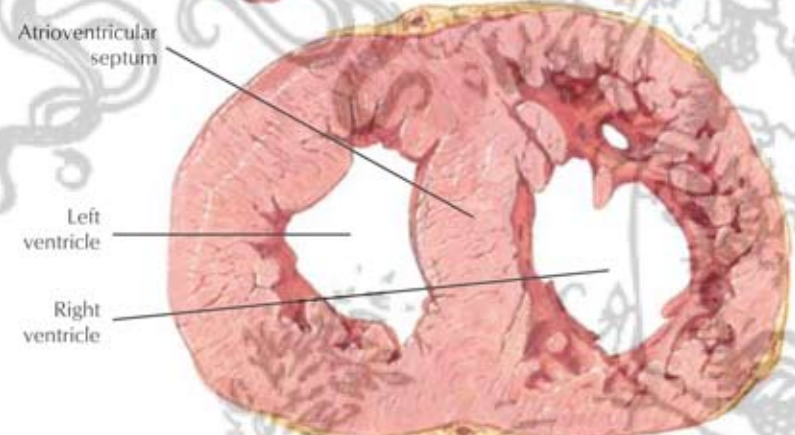
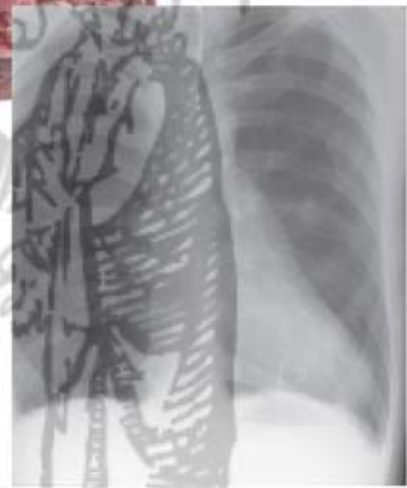


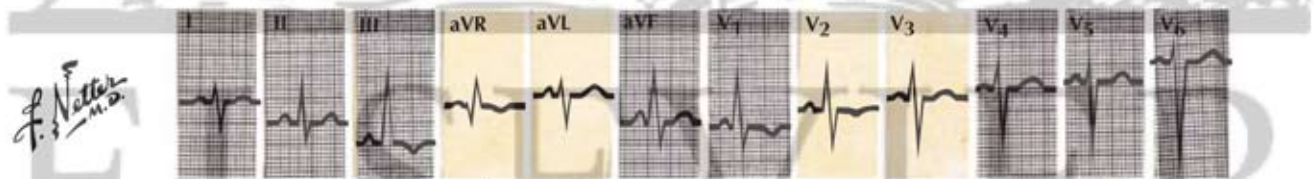
Extensive pulmonary emphysema.
 With great distention of pulmonary trunk and main pulmonary arteries, which have pressed the aorta against the trachea: pulmonary arteriosclerosis and right ventricular hypertrophy



Hypertrophy and dilatation of R. ventricle.
 Seen in coronal section of heart



X-ray: Chronic obstructive emphysema with cor pulmonale



R waves. In leads V₁ and V₂ as well as S, waves in leads I, V₄, V₅, and V₆ are indicative of right ventricular hypertrophy. Prominent P waves in leads II, III, aVF, V₁, and V₂ suggest right atrial enlargement.

F. Netter M.D.