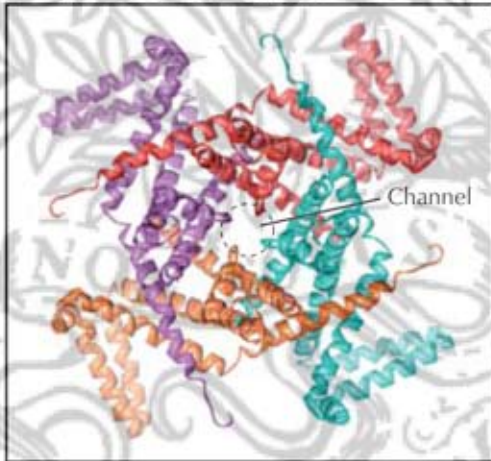


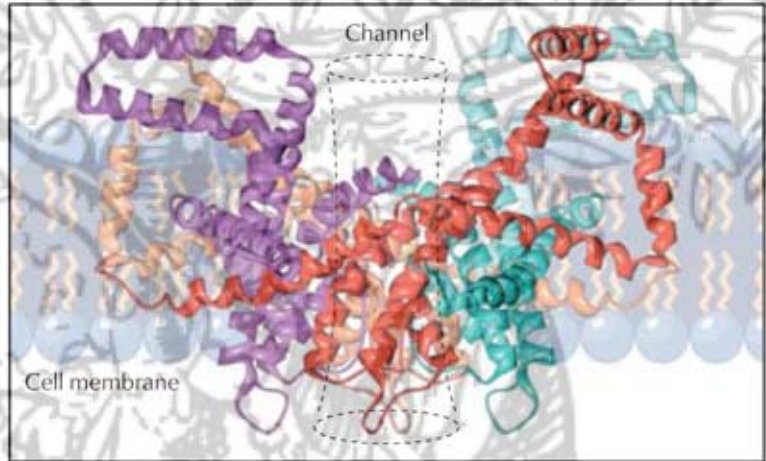
Selected Local Anesthetics

Class	Drug	Relative Duration of Action	Class	Drug	Relative Duration of Action
Amides	Bupivacaine	Long	Esters	Benzocaine	Topical only
	Lidocaine	Medium		Cocaine	Medium
	Mepivacaine	Medium		Procaine	Short
	Prilocaine	Medium		Tetracaine	Long
	Ropivacaine	Long			

Voltage-Gated Na⁺ Channel

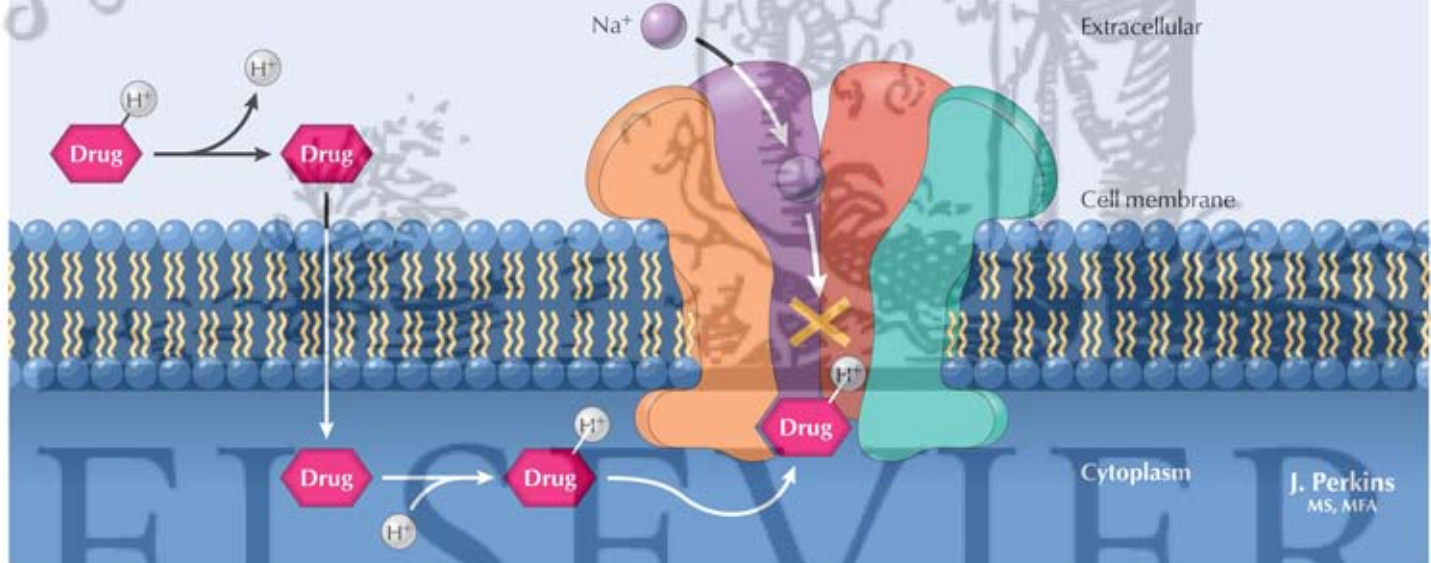


Extracellular ("top") view of Na⁺ channel



Side view of Na⁺ channel

Local Anesthetic Mechanism of Action



J. Perkins
MS, MFA