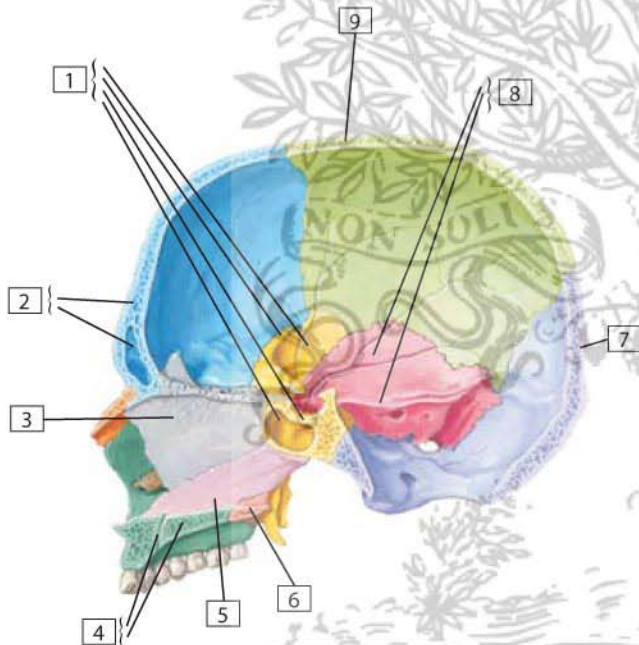


Skull: Midsagittal Section



1. Sphenoid bone (Greater wing; Lesser wing; Sella turcica; Sphenoidal sinus)
2. Frontal bone (Frontal sinus)
3. Ethmoid bone (Perpendicular plate)
4. Maxilla (Incisive canal; Palatine process)
5. Vomer
6. Palatine bone
7. Occipital bone
8. Temporal bone (Squamous part; Petrous part)
9. Parietal bone

Comment: Note the interior of the cranium and the nasal septum. The 8 cranial bones enclosing the brain include the unpaired frontal, occipital, ethmoid, and sphenoid bones and the paired temporal and parietal bones. The 14 facial bones include the paired lacrimal, nasal, palatine, inferior turbinate (not shown), maxillary, and zygomatic bones (not shown) and the unpaired vomer and mandible (not shown).

The nasal septum is formed by the perpendicular plate of the ethmoid bone, the vomer, and the palatine bones and septal cartilages.

The petrous portion of the temporal bone contains the middle and inner ear cavities and the vestibular system.

F. Netter M.D.